



Facebook Campus Expansion Project EIR

Menlo Park Planning Commission
NOP Scoping Session
July 13, 2015

Presentation Topics

- Introduction to the Project Team
- Project Overview
- Introduction to the Environmental Impact Report (EIR)
- Purpose of Scoping
- Probable Environmental Issues
- Submitting Comments
- Next Steps

Introduction to EIR Project Team

City of Menlo Park – Lead Agency

ICF International – Lead EIR Consultant

TJKM – Transportation Consultant

Bay Area Economics – Fiscal Impact Analysis (FIA)

BASELINE – Hazardous Materials

Keyser Marston – Housing Needs Assessment

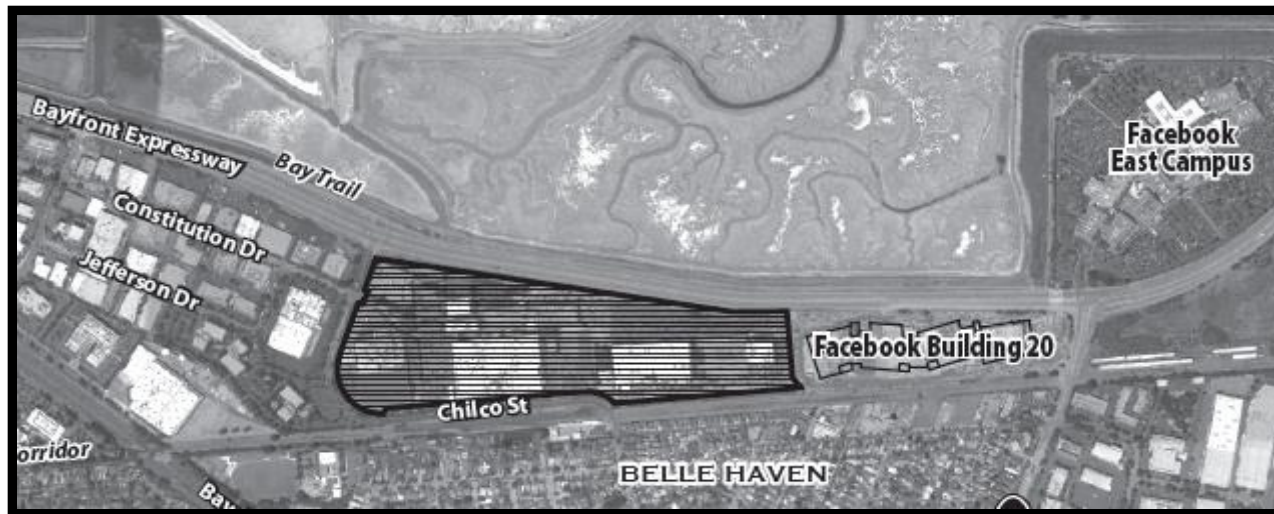
bae



KEYSER MARSTON ASSOCIATES

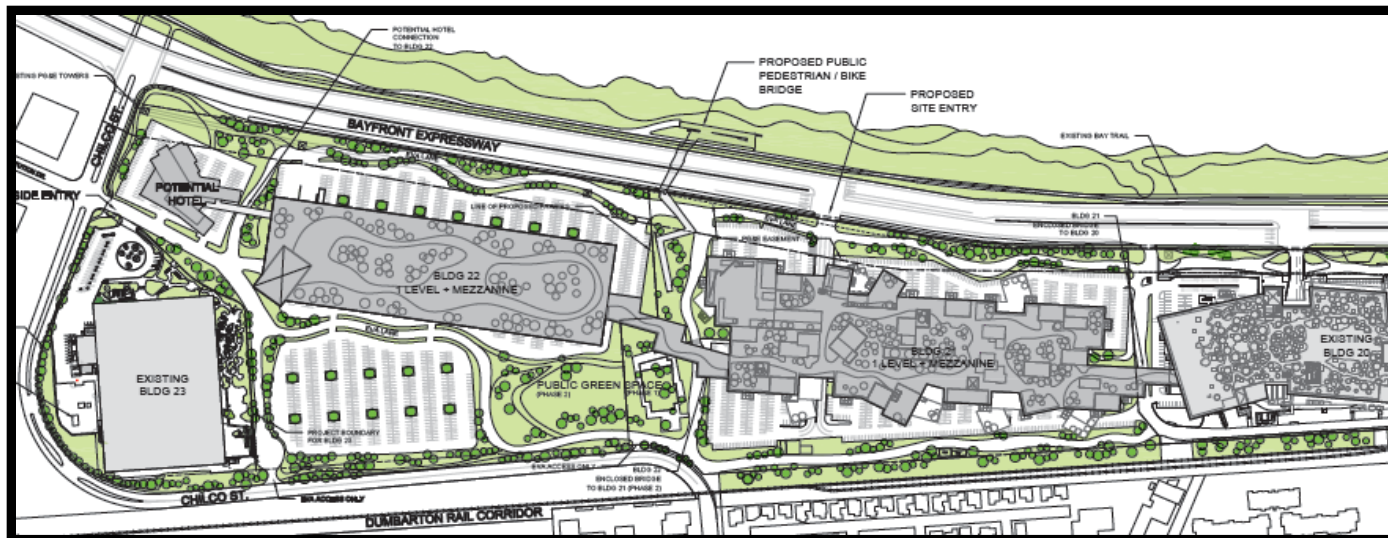
Project Overview – Existing

- Project Site = Existing TE Connectivity Campus
- 58 acres at 300-309 Constitution Drive
- 10 existing buildings totaling approximately 1.02 million gsf
- Industrial, warehouse, office, and R&D uses
- Building 23



Project Overview - Proposed

- Demolition = 9 existing buildings (~835,540 sf)
- Construction = 2 new buildings (~963,000 sf)
- Net Increase = ~127,000 sf
- Parking = 3,800 spaces



Project Overview – Proposed

- Potential Future Phase = 200-room hotel
- New signalized intersection at Bayfront Expressway
- Publicly accessible open space
- Construction of a new bicycle/pedestrian bridge
- Connections to existing buildings
- Project approvals

Introduction to the EIR

- Required by the California Environmental Quality Act (CEQA) for projects that may have significant environmental impacts
- Identifies potential physical environmental impacts of project
- Informs the public and public agency decision-makers prior to project approval/disapproval
- Recommends ways to reduce significant effects
- Considers project alternatives that may lessen potential impacts

Purpose of Scoping

- Gather public input on the scope of the environmental document
- Identify key environmental issues
- Identify potential mitigation measures
- Identify potential alternatives for consideration

EIR Process

- Notice of Preparation – June 18, 2015
- Scoping Meeting – July 13, 2015
- Draft EIR – Early 2016
- Draft EIR Public Hearing – Early 2016
- Final EIR – Summer 2016
- EIR Certification Hearing – Summer 2016
- Notice of Determination – Summer 2016

Environmental Issues to be Studied

- Aesthetics
- Air Quality
- Biological Resources
- Cultural Resources
- Geology/Soils
- Greenhouse Gas Emissions
- Hazardous Materials
- Hydrology/Water Quality
- Land Use/Planning Policy
- Noise
- Population and Housing
- Public Services/Recreation
- Utilities
- Transportation/Traffic

The EIR analysis will coordinate with the ConnectMenlo General Plan update to ensure consistency

Submitting Comments

- Via email: ktperata@menlopark.org
- Via letter: Kyle Perata, Associate Planner
Community Development Department, Planning Division
701 Laurel Street
Menlo Park, CA 94025
- Via fax: 650.327.1653
- Speaking at scoping session

Public Comment Period:
June 18 to July 20

All Comments Must Be Received By 5:00 p.m. on July 20

Next Steps

- Begin collecting existing conditions data
- Review proposed project for potential effects
- Consider scoping comments and responses to NOP in conducting the analysis